



POS INTEGRATION

**SOLUTION PACKAGE
FOR RETAIL**

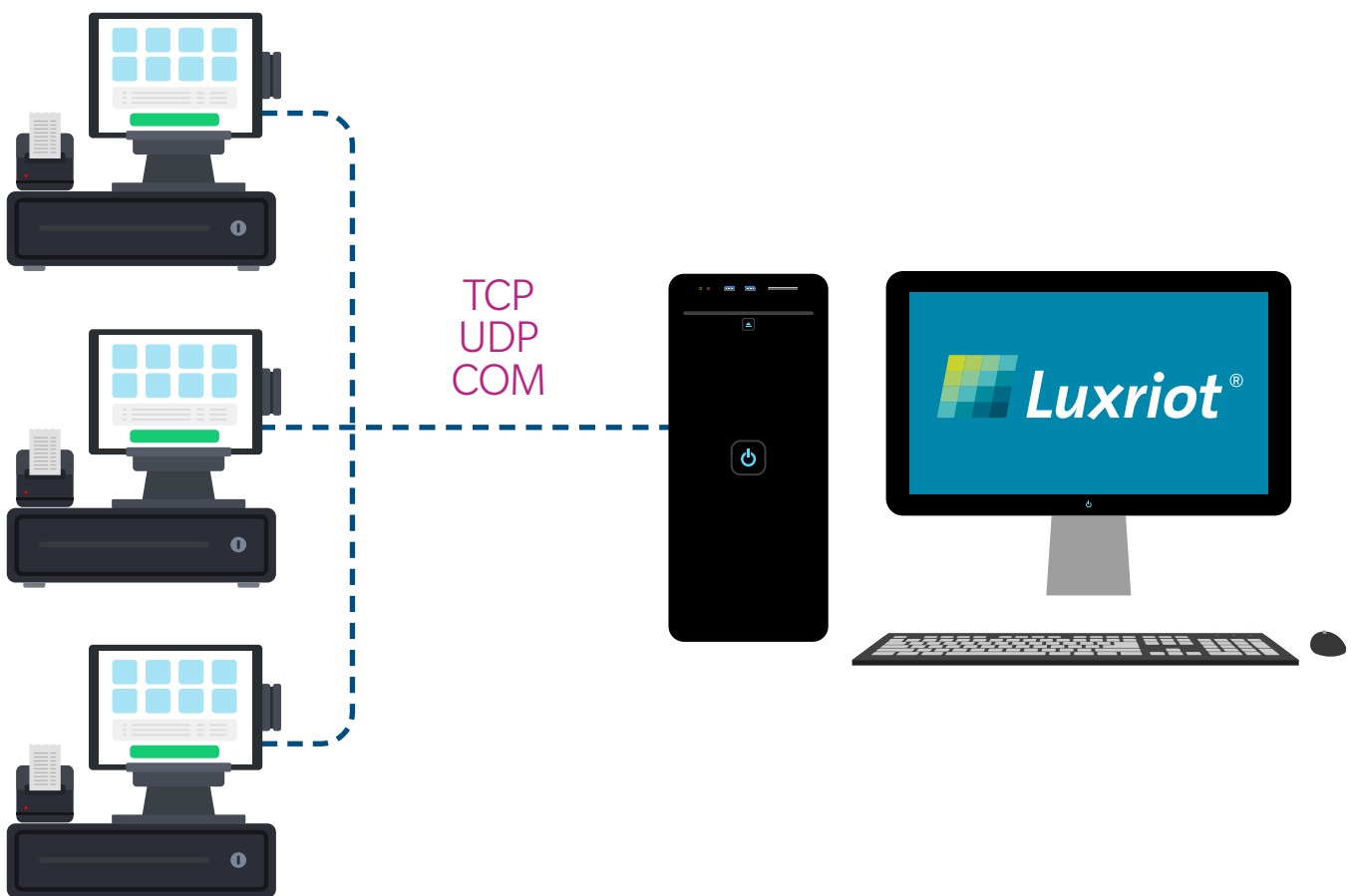
IS THERE A POS MACHINE IN YOUR BUSINESS?

Point-of-Sale desks are always quite critical areas of each business. They are often a weak spot vulnerable to human error or fraud. A CCTV camera above the cashier's head has become a standard many years ago. First of all, it acts as an internal fraud deterrence - no matter if the camera is real or fake - in most situations it will prevent the cashier from taking the money out of the drawer or purposely skipping scanning selected products. Most important, however, is the possibility to retrieve high quality recordings of each transaction. Finding a specific receipt usually takes time and effort, even if the issue time of a receipt in question is known. This traditional approach does not prevent any actions from happening, does not notify you of suspicious actions, nor does it allow to search for specific receipts, items nor operations. Integrating POS system with a VMS system is the answer to all of those challenges.

HOW DOES IT WORK?

Most of modern POS systems have the ability to send text data to a specific port, remotely and in real time. This Luxriot EVO server functionality allows you to receive information in textual form from third-party serial data providers like Point of Sale (POS) systems, bank machines and a multitude of other devices capable of delivering data strings over the following connection types:

- UDP port (remote connection)
- TCP port (remote connection)
- COM port (direct hardware connection to the server)



WHAT DATA DO YOU NEED?

Depending on what your POS system sends to Luxriot and in which data format, you can retrieve that data, save it, display it and specify certain strings of text to be automatically recognized or become variables for events and actions. Below you can find some example data that may POS systems send:

RECEIPT

Jack's Supermarket
ul.Krakowiaków 44, 02-255
Warszawa

Date: 20.04.2022 9:13

Apples	3,50EUR
⟨DISCOUNT⟩ 10%	-0,35EUR
Shampoo	4,20EUR
EAN:5998889517380	
Marlboro Light	6,00EUR
EAN:5903621231363	
⟨CANCEL ITEM⟩	-6,00EUR
Absolut Citron	12,00EUR
EAN:7312040090129	
Nacho Chips	2,12EUR
EAN:5900259094704	
Salsa Dip	3,13EUR
EAN:5900166002694	

TOTAL:	24,60EUR
Sub-total:	18,94EUR
Tax:	5,66EUR
Payment method:	CASH
Receipt #:	1237
Cashier:	Jacek W.



Have a Nice Day!

PRODUCT NAME, NUMBER & PRICE
DISCOUNT INFO
CANCELLED ITEM
RECEIPT TOTAL
PAYMENT METHOD
RECEIPT NUMBER
CASHIER NAME

BUT ALSO:
MANUAL DRAWER OPENING
CANCELLED RECEIPT
CASHIER LOGIN/LOGOUT
LOYALTY CARD SCANNED
PAYBACK USED
ADD TAX NUMBER

MULTI-LANGUAGE ENCODING SUPPORT

касова бележка

Страхотен ресторант
ул. Витошки набрани 9, 1766 София

дата: 20.04.2022 9:13

шопска салата	7,50BGN
Голямо количество ракия	20BGN
баница	10BGN

сума: 37,50BGN

λογαριασμός

Υπέροχη ταβέρνα
Μεσολογίου 3, Μεταμόρφωση 144 51 Αθήνα

ημερομηνία: 20.04.2022 9:13

σουβλάκι	3,50EUR
ρακόμελο	9,99EUR
μπουγάτσα	4,20EUR

ΣΥΝΟΛΟ: 17,69EUR

收銀機統一發票

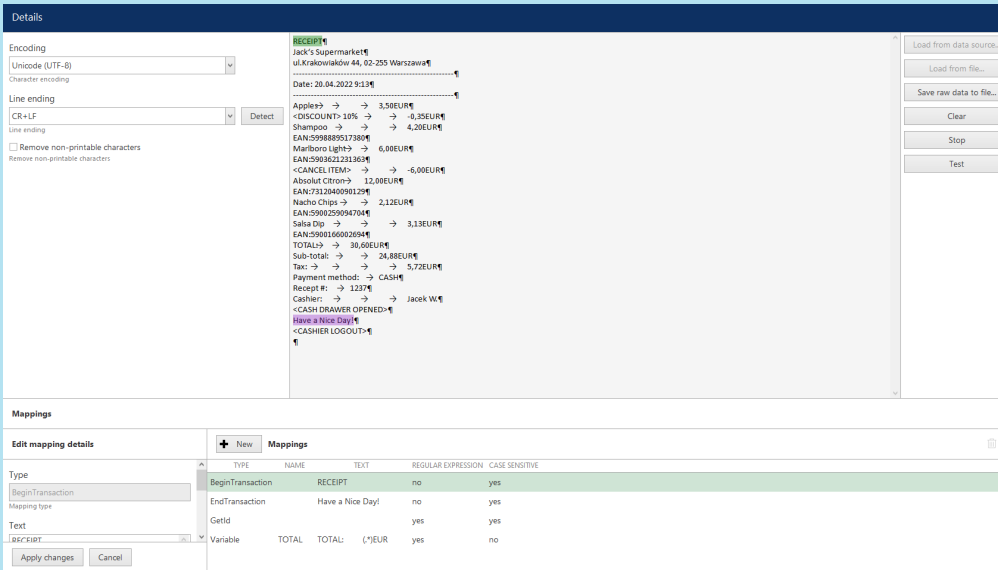
文傑熱炒
安東街45號 大安區 台北市

20.04.2022 9:13

滷肉飯	200NTD
金牌台灣啤酒	500NTD
臭豆腐	150NTD

總計: 850NTD

EASY TO SETUP



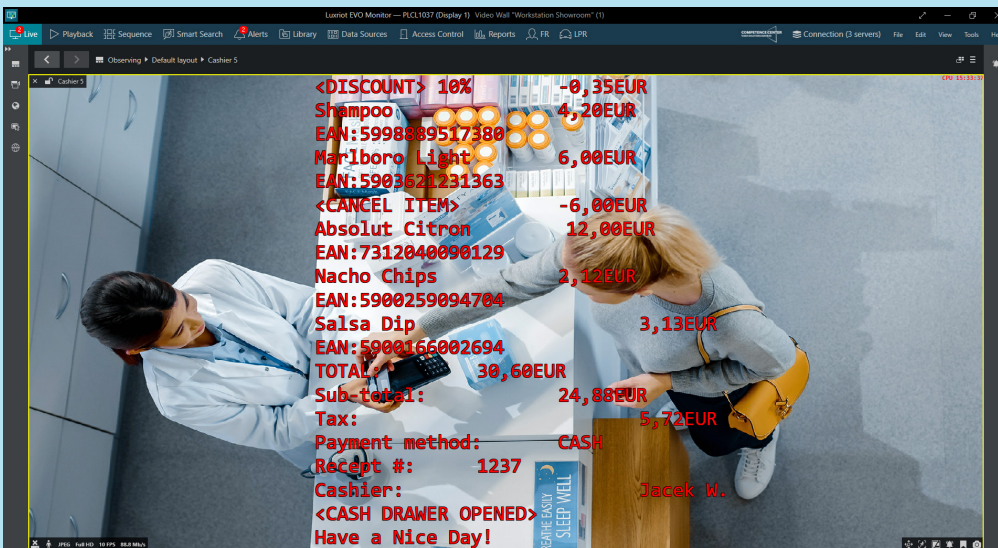
A dedicated data “sniffer” in the Luxriot Console helps you to capture the incoming data from the POS system to easily and quickly configure the integration.

You simply specify the receipt’s beginning and end, but also if needed - configure so called “variables”. By doing so, Luxriot will know that a specific string contains a number that you might want to interpret.

For example, if you specify that in a data string “<DISCOUNT> 10%” the value after “<DISCOUNT>” is the discount value, you can create various event triggers:

IF <DISCOUNT> is greater or equal to “20” THEN perform a desired action (send a notification, add a bookmark, take a snapshot, send an email, and many more...)

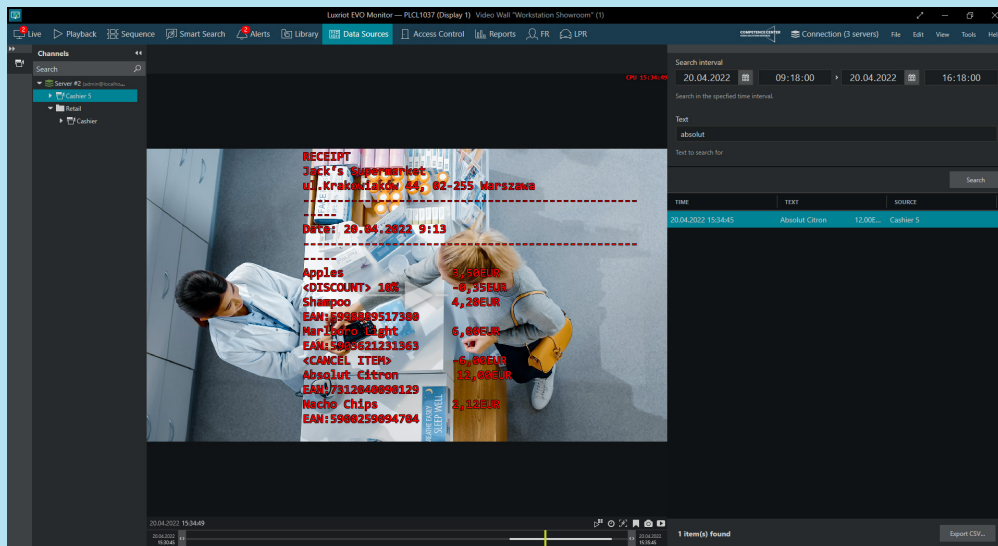
LIVE VIEW



The live data stream from your POS system will be displayed on top of a specified camera, overlooking the POS desk. The size, position and color of the text overlay can be customized. Each camera can be connected to a different data source.

Displaying the information on top of the video stream makes it easy to see what is happening at the cashier desk in real-time. That data is also recorded and stored.

SEARCH, PLAYBACK & EXPORT



Having the data synchronized and safely recorded with the camera stream makes it possible to find a specific moment within seconds. The overlay is displayed in playback mode, same as in the live view.

Most importantly, you can search for specific text, making it is easy to identify whether the customer was given the right change, what happened when a cash drawer was opened manually, why an invoice was cancelled, who received an extra-large discount etc.

You simply type the text string and a list appears.

From there, you can easily export the recording or a snapshot, including the data overlay.

HOW DO WE HELP YOU SAVE MONEY, TIME & REPUTATION?

RECEIPT

POS Data Provided:

Product Name, Code and Price

Discount Info

Receipt Total

Payment Method

Receipt Number

Manual Drawer opening
Cancelled Item/Receipt

Tax Number Added/ Loyalty Card
Scanned/ Cashier's Name

....and more

PROBLEM	BACKGROUND	SOLUTION
PRODUCT RELATED FRAUD	Searching for specific products to detect barcode or quantity mismatch.	<ul style="list-style-type: none"> Search for a product code/name or set action triggers. Retrieve video or get notified upon specific product being scanned.
„FRIENDLY“ DISCOUNTS	The cashier gives higher discounts to friends or family members.	<ul style="list-style-type: none"> Set action triggers for discount above specific value Get notified
PROCEDURE HANDLING	Check whether high value transactions were handled correctly.	<ul style="list-style-type: none"> Set action triggers for total above specific value Easily retrieve the tagged clips
MONEY RELATED FRAUD	Easily tag all transactions paid by checks, foreign currency or other non-typical forms.	<ul style="list-style-type: none"> Set action triggers for specific words („check“, „coupon“ etc) Get notified or easily find clips
CUSTOMER DISPUTES	The customer claims they have been given wrong change or product. Video evidence is needed.	<ul style="list-style-type: none"> Search for a receipt number. Retrieve the video. Resolve the dispute
POCKETING MONEY	The cashier taking money from cash drawer or cancelling a receipt then pocketing the money.	<ul style="list-style-type: none"> Set action triggers for specific words (eg. <DRAWER OPEN>) Get notified or easily find clips
CUSTOMER RELATED ISSUES	Finding a receipt connected with a specific person.	<ul style="list-style-type: none"> Search for a specific text. Retrieve video.

WHAT WILL YOU NEED?



LUXRIOT EVO CHANNEL LICENSE

Depending on the project - EVO S (single-server) or EVO GLOBAL (for multiple sites). The EVO license includes POS module FREE for Konica Minolta customers.



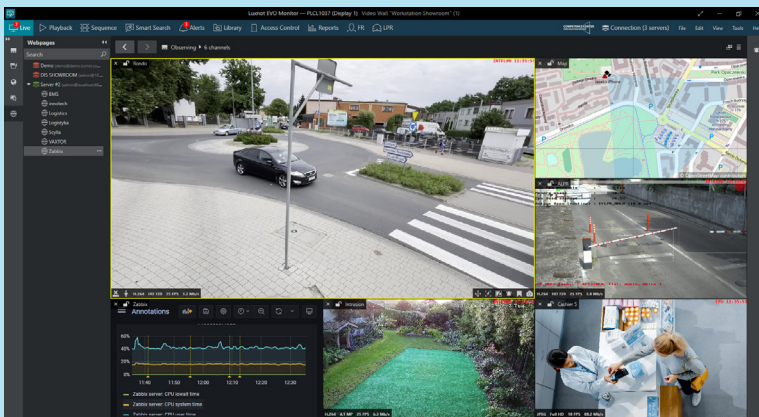
HIGH RESOLUTION CAMERAS

Located above the POS desk, provides high quality evidence of all operations. For the resolution, shape and zoom function, we recommend Mobotix MOVE 4K Dome.



POS SYSTEM AND VMS SERVER

Please make sure your POS system streams text data via TCP, UDP or COM port. Luxriot EVO software requires a Windows server. Ask us for the hardware options.



Luxriot Evo is a complete video management ecosystem, offering superior value and outstanding service experience. Combining the cutting-edge developments in machine learning with cloud computing, Luxriot Evo is designed to put your mind at rest.

Combine all your video management activities into a unified virtual ecosystem with an efficient scalable architecture, intuitive interface, advanced security features, powerful analytics modules and extensive possibilities for integration.

Luxriot Highlights



64-bit core

Using the full power of hardware for efficient software architecture



Powerful analytics tools

New modules for advanced video analytics, along with face and license plate recognition



Event and Action Manager

Automated video surveillance process using the Alarm and Action manager



Failover

Constant monitoring of the status of all servers and failover management from the central server



Archive replication

Advanced mirror recording with scheduled transfers ensures your data is always safe



Integrations and API

Enhance your video management with a vast range of integration possibilities for third-party software